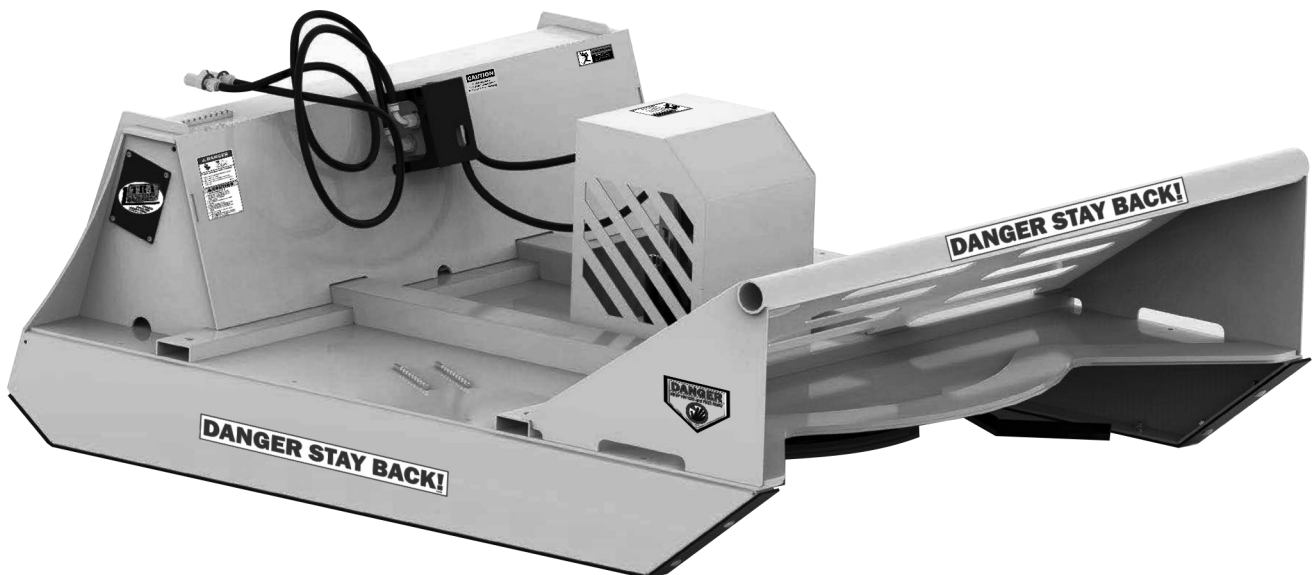




Heavy Duty Brush Cutter

TRBC60, TRBC72



Operator's Manual



Page left blank intentionally

**TO THE DEALER:**

Assembly and proper installation of this product is the responsibility of the Tar River dealer. Read manual instructions and safety rules. Make sure all items on the Dealer's Pre-Delivery and Delivery Check Lists in the Owner's/Operator's Manual are completed before releasing equipment to the owner.

TO THE OWNER:

Read this manual before operating your Tar River equipment. The information presented will prepare you to do a better and safer job. Keep this manual handy for ready reference. Require all operators to read this manual carefully and become acquainted with all the adjustment and operating procedures before attempting to operate. Replacement manuals can be obtained from your selling dealer. The equipment you have purchased has been carefully engineered and manufactured to provide dependable and satisfactory use. Like all mechanical products, it will require cleaning and upkeep. Lubricate the unit as specified. Observe all safety information in this manual and safety decals on the equipment. For service, your authorized Tar River dealer has trained mechanics, genuine Tar River service parts, and the necessary tools and equipment to handle all your needs. Use only genuine Tar River service parts. Substitute parts will void the warranty and may not meet standards required for safe and satisfactory operation.

Record your implement model and serial number in the space provide below. Your dealer will need this information to give you prompt, efficient service.

Model Number: _____

Serial Number: _____

Date Purchased: _____



Table of Contents

Introduction	5
Technical Specifications	5
Safety	6
Safety Signal Words	6
General Safety Guidelines	7
Safety Decal Care	7
Before Operation	8
During Operation	9-12
Highway And Transport Operations	13-14
Operating Instructions.....	15-17
Maintenance.....	18
Knife Replacement.....	19
Technical Data and Operational Characterisics.....	20-21
Torque Specifications	22
Parts Breakdown	23-37
Warranty	38



Introduction

Thank you for purchasing your TRBC Heavy Duty Brush Cutter. The TRBC Heavy Duty Brush Cutter is built for those demanding jobs and built heavy to withstand years of hard work.

Technical Specifications

- Low-flow cutter (16/25)
- Open faced, heavy duty deck
- 6” Cutting capacity
- Hydraulic direct drives & internal relief valve
- Bi-directional cutting
- Extreme blade pan that is extra large to maintain force & momentum
- 3 cutting blades
- Units come standard with flat faced couplers & hoses
- Standard universal Skid Steer Mount

	TRBC60	TRBC72
Weight	1,074 lbs.	1530 lbs.
Mount	Universal Skid Steer	Universal Skid Steer
Cutting width	60”	72”
Number of blades	3	3
Flow	<i>14-20 gpm</i>	<i>14-20 gpm</i>
Cutting capacity	4”	5”

Important Safety Information

Safety

It is important that you read the entire manual and to become familiar with this product before you begin using it. This product is designed for certain applications only. The manufacturer cannot be responsible for issues arising from modification. We strongly recommend this product not be modified and /or used for any application other than that for which it is designed. If you have any questions relative to a particular application, DO NOT use the product until you have first contacted us to determine if it can or should be performed on the product.

Read and understand this manual and all safety signs before operating and maintaining . Review the safety instructions and precautions annually.

Safety Signal Words

TAKE NOTE! This safety alert symbol found though out this manual is used to call you attention to instructions involving you personal safety and the safety of others. Failure to follow these instructions can result in injury or death.



**This symbol means:
Attention!
Become alert!
Your safety is involved!**

Note the use of the signal words, **DANGER, WARNING and CAUTION** with the safety messages. The appropriate signal word for each has been selected using the following guidelines:



DANGER: Indicates an imminently hazardous situation that, if not avoided, will result in death or serious injury. This signal word is to be limited to the most extreme situations typically for machine components which, for functional purposes, cannot be guarded.



WARNING: Indicates a potentially hazardous situation that, if not avoided, could result in death or serious injury, and includes hazards that are exposed when guards are removed. It may also be used to alert against unsafe practices.



CAUTION: Indicates a potentially hazardous situation that, if not avoided, may result in minor or moderate injury. It may also be used to alert against unsafe practices.



Important Safety Information

General Safety Guidelines

Safety of the operator is one of the main concerns in designing and developing a new piece of equipment. Designers and manufacturers build in as many safety features as possible. However, every year many accidents occur which could have been avoided by a few seconds of thought and a more careful approach to handling equipment. You, the operator, can avoid many accidents by observing the following precautions in this section. To avoid personal injury, study the following precautions and insist those working with you, or for you, follow them.

Replace any **DANGER, WARNING, CAUTION** or instruction safety decal that is not readable or is missing. Location of such decals are indicated in this manual. Do not attempt to operate this equipment under the influence of drugs or alcohol.

Review the safety instructions with all users annually.

This equipment is dangerous to children and persons unfamiliar with its operation. The operator should be a responsible adult familiar with farm machinery and trained in this equipment's operations. **Do not allow persons to operate or assemble this unit until they have read this manual and have developed a thorough understanding of the safety precautions and of how it works.**

To prevent injury of death, use a tractor equipped with a Roll Over Protection System (ROPS). Do not paint over, remove or deface any signs or warning decals on your equipment. Observe all safety signs and practice the instructions on them.

Never exceed the limits of a piece of machinery. If its ability to do a job, or to do so safely, is in question, **Don't try it!**



Safety Decal Care

- Keep safety signs clean and legible at all times.
- Replace safety signs that are missing or have become illegible.
- Replaced parts that displayed a safety sign should also display the current safety sign
- Safety signs are available from your Distributor or Dealer Parts Department or the factory.

Important Safety Information

How to install Safety Signs:

- Be sure that the installation area is clean and dry.
- Decide on the exact position before you remove the backing paper.
- Remove the smallest portion of the split backing paper.
- Align the decal over the specified area and carefully press the small portion with the exposed sticky backing in place.
- Slowly peel back the remaining paper and carefully smooth the remaining portion of the decal in place.
- Small air pockets can be pierced with a pin and smoothed out using the piece of decal backing paper.



Before Operation

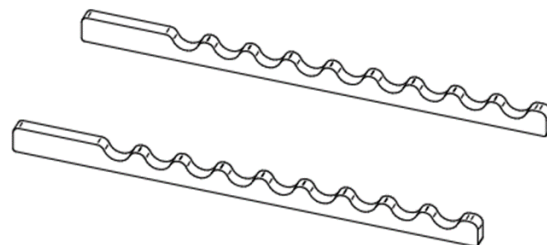
- Carefully study and understand this manual.
- Do not wear loose-fitting clothing, which may catch in moving parts.
- Always wear protective clothing and substantial shoes.
- Assure that all tires are inflated evenly.
- Give the unit a visual inspection for any loose bolts, worn parts or cracked welds, and make necessary repairs. Follow the maintenance safety instructions included with this manual.
- Be sure that there are no tools lying on or in the equipment.
- Do not use the unit until you are sure that the area is clear, especially of children and animals.
- Don't hurry the learning process or take the unit for granted. Ease into it and become familiar with your new equipment.
- Practice operation of your equipment and its attachments. Completely familiarize yourself and other operators with its operation before using.
- Use a tractor equipped with a Roll Over Protection System (ROPS) and fasten your seat belt prior to starting engine.
- The manufacturer does not recommend usage of tractor with ROPS removed.
- Move tractor wheels to the widest recommended settings to increase stability.
- Securely attach to towing unit. Use a high strength, appropriately sized hitch pin with a mechanical retainer and attach safety chain.
- Do not allow anyone to stand between the tongue or hitch and the towing vehicle when backing up to the equipment.
- Do not use the unit until you are sure that the area is clear, especially of children and animals.

Important Safety Information



During Operation

- Children should not be allowed on the machine.
- Clear the area of small children and bystanders before moving the machine.
- If using a towing unit, securely attach implement by using a hardened 3/4" pin, a metal retainer, and safety chains if required. Shift towing unit to a lower gear before going down steep downgrades, thus using the engine as a retarding force. Keep towing vehicle in gear at all times. Slow down for corners and rough terrain.
- Make sure you are in compliance with all local and state regulations regarding transporting equipment on public roads and highways. Lights and slow moving signs must be clean and visible by overtaking or oncoming traffic when machine is transported.
- Beware of bystanders, **particularly children!** Always look around to make sure that it is safe to start the engine of the towing vehicle or move the unit. This is particularly important with higher noise levels and quiet cabs, as you may not hear people shouting.
- **NO PASSENGERS ALLOWED!** Do not carry passengers anywhere on, or in, the tractor or equipment, except as required for operation.
- Keep hands and clothing clear of moving parts.
- Do not clean, lubricate or adjust your equipment while it is moving.
- When halting operation, even periodically, set the tractor or towing vehicle brakes, disengage the PTO, shut off the engine and **remove the ignition key.**
- Be especially observant of the operating area and terrain. Watch for holes, rocks or hidden hazards. Always inspect the area prior to operation.
- **DO NOT** operate near the edge of drop-offs or banks.
- **DO NOT** operate on steep slopes as overturns may result.
- Operate up and down (not across) intermediate slopes. Avoid sudden starts and stops.
- The brush cutter must be equipped with all protective guards (as provided by the manufacturer) against access to moving parts. Guards must be complete and fully functional. Never operate the implement with guards removed.
- When stepping on the brush cutter, be aware that the surface may be slippery. Place your feet only where there are protrusions provided for this purpose, which are shown in the figure below.





Important Safety Information



Debris Discharge Warnings

- Your brush cutter discharges debris out the front of the machine. When cutting with the Brush Cutter, NEVER discharge material toward bystanders. All bystanders must be AT LEAST 75 feet away when operating the cutter. NEVER allow bystanders near the machine while in operation. When cutting near bystanders is unavoidable, DO NOT operate the cutter without the front guard flap in place (if equipped with guard flap).
- ALWAYS clear the cutting area of objects (bottles, rocks, fencing wire, etc.) that may be picked up and thrown.
- ALWAYS use a shatterproof cab door or the 3/8” thick safety chain that came with your Brush Cutter (optional) when cutting. The door is used not only to protect the operator from flying debris, but also from overhanging or protruding objects (tree limbs, rebar, vines etc.) from entering the cab and operator injury.

Important Safety Information



Rotating Parts Warnings

- ALWAYS disengage power to the Brush Cutter and shut the skid steer loader engine off prior to leaving the operator's cab or performing any inspection or maintenance to either the brush cutter or the skid steer loader.
- NEVER place hands or feet under the Brush Cutter deck or near the blade system while the unit is **in** operation.
- NEVER articulate (roll) the deck downward to a degree that exposes the operator to the blade system.



Hydraulic System Warnings

- ALWAYS release the pressure on the hydraulic system of the cutter prior to removing the attachment from the skid steer loader or working on any part of the hydraulic system. Hydraulic hoses and components operate under extreme pressure and heat. A small stream of fluid from a pinhole leak in a hydraulic hose can penetrate the skin and/or cause burns. Whenever hydraulic fluid is injected into the body, ***seek medical attention at once*** to reduce chances of a dangerous infection. ALWAYS wash skin with soap and water after contact with hydraulic fluid, as it is an irritant to skin and eyes.
- Your Brush Cutter has been designed to reduce the likelihood of hydraulic system leakage. Each and every hydraulic system is checked prior to shipment. However, over time, any hydraulic system may develop fluid leaks. Small leaks may produce high-pressure discharge flows capable of causing injury should skin come in contact with such discharge.
- Leaking fluid can make the deck and ground surfaces very slippery, causing difficulty in using tools and also increasing the possibility of slips and falls. ALWAYS wipe away all fluid that may have leaked during maintenance.
- NEVER operate a Brush Cutter on a "high-flow" skid steer loader unless the cutter is equipped with a "high-flow" motor. Motor failure can occur if such use is performed. Damage incurred to the hydraulic motor due to "high - flow" usage is not covered. Please refer to the front cover of the manual for the maximum allowable flow for your Brush Cutter.
- Regularly check the condition of hydraulic connections and hoses, any leakage or damage is unacceptable.



Important Safety Information

- Use the oil recommended by the manufacturer, it is forbidden to use the brushcutter when there is a different type of hydraulic oil in the vehicle than in the machine.
- Used oil should be stored in sealed containers and periodically delivered to points for their utilization.
- Hydraulic hoses must be replaced every 3 years, regardless of their technical condition.
- Only a suitably qualified person may repair and replace the hydraulic system components.

Maintenance

- Before each use and after 6 hours of operation of the brush cutter, check its technical condition, including the condition of screw connections.
- It is forbidden for people to stay under the raised brush cutter, there is a risk of serious injury by being crushed by structural elements.
- Do not use unfastened, hanging parts of work clothes during work, assembly, disassembly, adjustment. Keep them away from structural elements that may catch them.
- Due to natural wear and tear, the condition of: bearings, screw connections, hydraulic system elements should be checked
- Relieve residual oil pressure before working on the hydraulic system.
- Any modifications to the brush cutter release the manufacturer from any liability for any resulting damage or injury.
- It is forbidden to carry out any work (maintenance, repair) under the lifted and unsecured machine.
- Comply with the general rules of industrial safety.
- Repair, maintenance and cleaning work should only be carried out with the ignition key removed from the vehicle's ignition, the parking brake applied and secured against access by third parties.
- When replacing parts, use only original parts from the manufacturer, who is not responsible for the use of non-original parts.
- For work requiring the brush cutter to be lifted, an approved mechanical or hydraulic lift should be used for this purpose. When lifting the machine, additionally use stable and durable supports. It is forbidden to work only under the suspension system of the carrying vehicle and to use supports made of fragile elements (hollow bricks, bricks, concrete blocks, etc.).

Important Safety Information



Highway and Transport Operations

- Adopt safe driving practices.
- Keep the brake pedals latched together at all times. **Never use independent braking with machine in tow as loss of control and/or upset of unit can result.**
- Always drive at a safe speed relative to local conditions and ensure that your speed is low enough for an emergency stop to be safe and secure. Keep speed at a minimum.
- Reduce speed prior to turns to avoid the risk of overturning.
- Avoid sudden uphill turns on steep slopes.
- Always keep the tractor or towing vehicle in gear to provide engine braking when going downhill. Do not coast.
- Do not drink and drive!
- Comply with state and local laws governing highway safety and movement of farm machinery on public roads.
- Use approved accessory lighting, flags and necessary warning devices to protect operators of other vehicles on the highway during daylight and nighttime transport. Various safety lights and devices are available from your dealer.
- The use of flashing amber lights is acceptable in most localities. However, some localities prohibit their use. Local laws should be checked for all highway and marking requirements.
- When driving the tractor and equipment on the road or highway under 40 kph (20 mph) at night or during the day, use the amber warning lights and a slow moving vehicle (SMV) identification emblem.
- Plan your route to avoid heavy traffic.
- Be a safe and courteous driver. Always yield to oncoming traffic in all situations, including narrow bridges, intersections, etc.
- Be observant of bridge loading ratings. Do not cross bridges rated at lower than the gross weight at which you are operating.
- Watch for obstructions overhead and to the side while transporting.
- Always operate in a position to provide maximum visibility at all times. Make allowances for increased length and weight of the equipment when making turns, stopping the unit, etc.
- Pick the most level route when transporting across fields. Avoid the edges of ditches or gullies and steep hillsides.
- Be extra careful when working in inclines.



Important Safety Information



Highway and Transport Operations

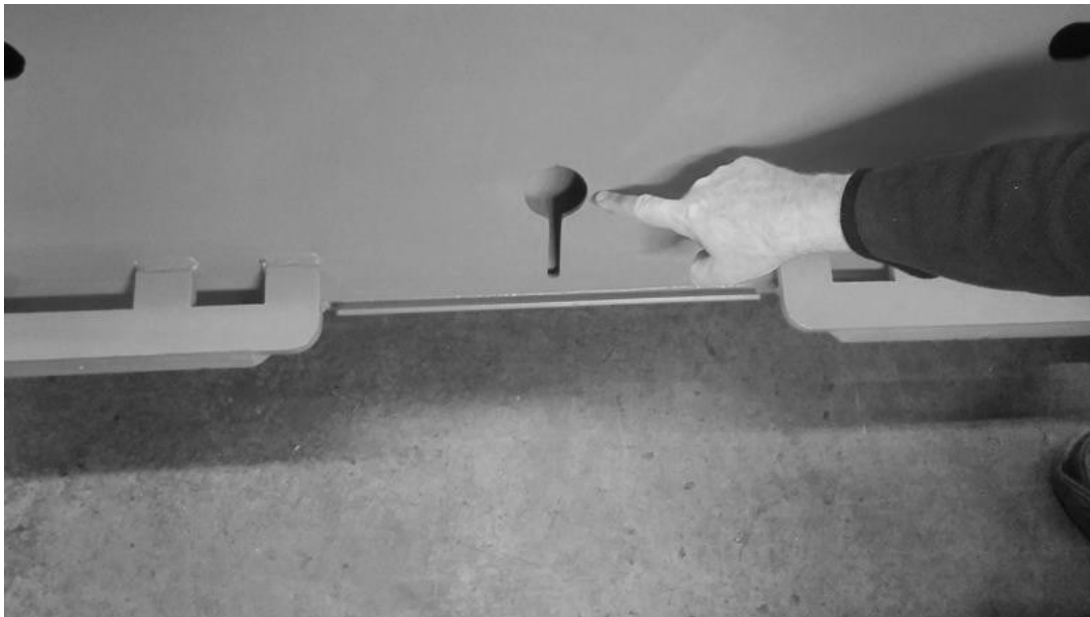
- Maneuver the tractor or towing vehicle at safe speeds.
- Avoid overhead wires or other obstacles. Contact with overhead lines could cause serious injury or death.
- Avoid loose fill, rocks and holes, they can be dangerous for equipment operation or movement.
- Allow for unit length when making turns,
- Operate the towing vehicle from the operator's seat only.
- Never stand alongside of unit with engine running or attempt to start engine and/or operate machine while standing alongside of unit.
- Never leave running equipment attachments unattended.
- As a precaution, always recheck the hardware on equipment following every 100 hours of operation.
Correct all problems. Follow the maintenance safety procedures.

Operating Instructions

Attaching the Brush Cutter

The installation of your Brush Cutter is the same for any other powered attachment for your skid steer loader:

1. Using the attached instructions, connect the Safety chain to skid steer prior to using Brush Cutter.
2. Pull up to the brush cutter and connect it to your skid steer loader.
3. Secure the lock down lever or levers.
4. Connect the hydraulic hoses from the brush cutter to your machine. The hoses provided are equipped with quick- disconnect fittings (both male and female) for ease of use.

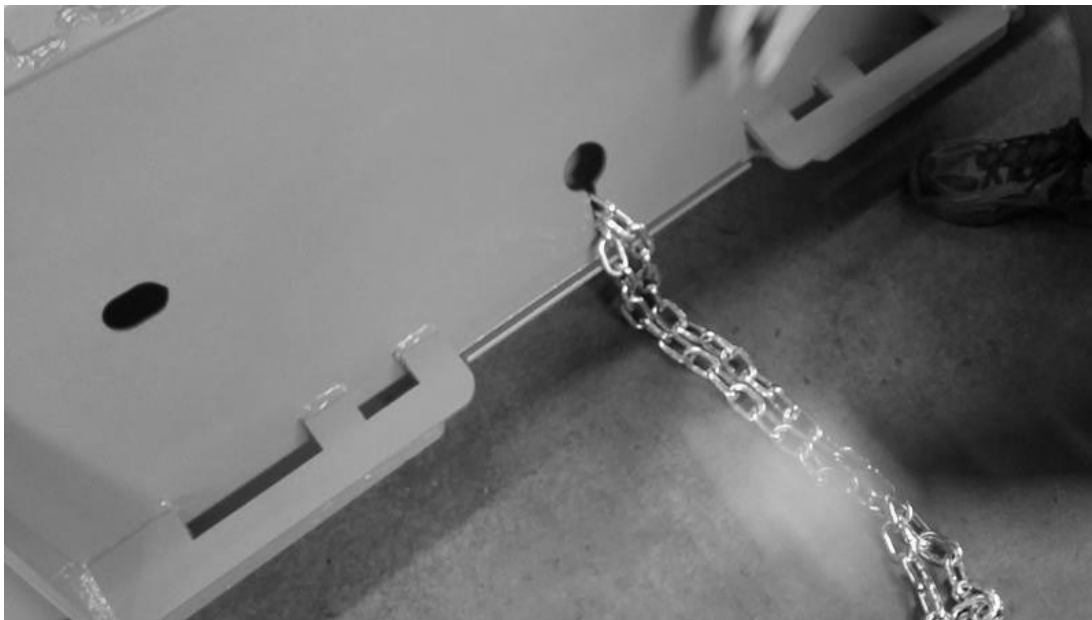


Step 1: Locate link hole at back of unit

Operating Instructions



Step 2: Using one end of safety chain, drop number of desired links into link hole. Once chain is in place check to ensure it is secure and cannot be pulled back through link hole.



Step 3: Take the loose end of the chain and secure it to the Brush Cutter.

Step 4: Pull chain back to Brush Cutter placing this end of the chain into the link hole. Make sure this end of the chain is secure and cannot be pulled back through the link hole. After following these steps to ensure the safety chain is properly connected. You may now proceed to connect skid steer to the Brush Cutter.



Operating Instructions

Cutting Operation

The brush cutter is capable of, and in fact intended to be utilized for, mulching trees and other vegetation of varying heights and diameters of up to 5” - 6”. As a safety feature, when cutting large diameter vegetation, the Brush Cutter is equipped with a hydraulic motor cushion valve for shut down of the blade system. This feature lessens the chance of damaging the cutter's hydraulic system or blade system when cutting larger diameter vegetation. Directions for use are as follows:

Cutting Ground Level Vegetation

Raise the rear of the brush cutter approximately 4” - 5” above ground level. The deck of the brush cutter should be sloping downward and away from the operator. This is the optimum position for cutting materials that are close to the ground. Please note: If the operator can see the blade system in operation, the back of the brush cutter is raised TOO HIGH!

Cutting Ground Level Vegetation

Raise the front deck of the brush cutter up approximately 1’ - 2’ above ground level. Do not lift the rear portion of the deck. Keep it approximately 4” -5” above ground level. Slowly drive into the vegetation and use the hydraulic tilt (roll) to bend or push the vegetation over. As you bend the vegetation over and drive into it, the blades will cut it into. The vegetation can now be mulched by rotating the front of the brush cutter and driving forward several feet. Then roll the back of the cutter down and back-drag atop the vegetation.



Maintenance

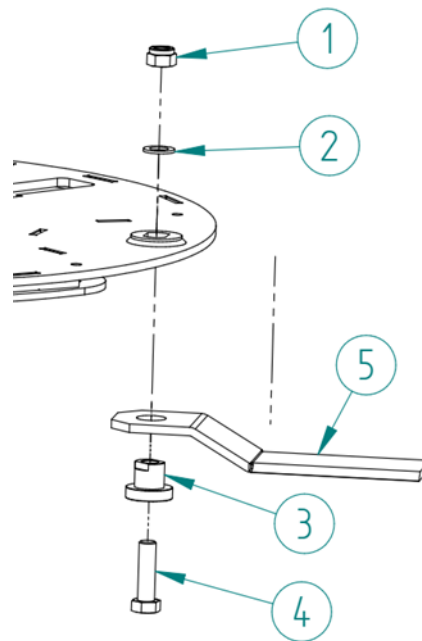
- Before each use and after 6 hours of operation of the brush cutter, check its technical condition, including the condition of screw connections.
- It is forbidden for people to stay under the raised brush cutter, there is a risk of serious injury by being crushed by structural elements.
- Do not use unfastened, hanging parts of work clothes during work, assembly, disassembly, adjustment. Keep them away from structural elements that may catch them.
- Due to natural wear and tear, the condition of: bearings, screw connections, hydraulic system elements should be checked
- Relieve residual oil pressure before working on the hydraulic system.
- Any modifications to the brush cutter release the manufacturer from any liability for any resulting damage or injury.
- It is forbidden to carry out any work (maintenance, repair) under the lifted and unsecured machine.
- Comply with the general rules of industrial safety.
- Repair, maintenance and cleaning work should only be carried out with the ignition key removed from the vehicle's ignition, the parking brake applied and secured against access by third parties.
- When replacing parts, use only original parts from the manufacturer, who is not responsible for the use of non-original parts.
- For work requiring the brush cutter to be lifted, an approved mechanical or hydraulic lift should be used for this purpose. When lifting the machine, additionally use stable and durable supports. It is forbidden to work only under the suspension system of the carrying vehicle and to use supports made of fragile elements (hollow bricks, bricks, concrete blocks, etc.).

Knife Replacement

The condition of the knives should be checked before each use of the machine, and after 6 hours of labour.

Steps to follow when replacing knives:

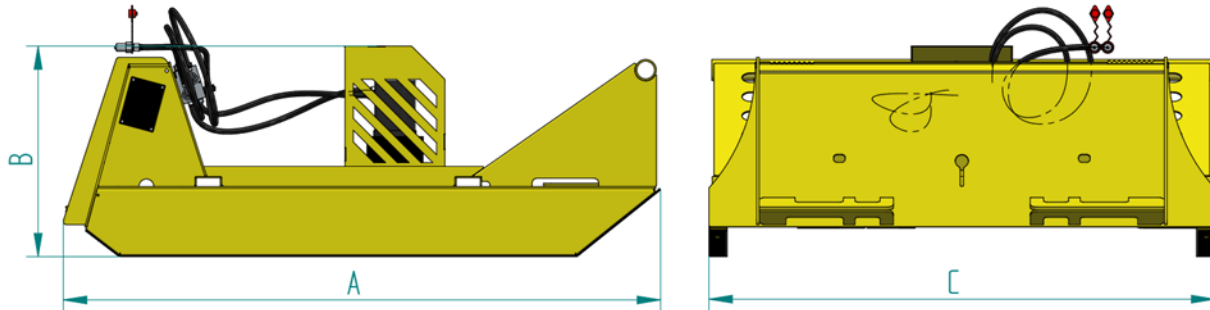
1. Before replacing the blades, park the brush cutter on a level surface, turn off the engine in the vehicle, secure the vehicle and the machine against sliding, make sure that the power supply to the brush cutter is turned off, take care of your own safety when changing the blades. Use personal protective equipment such as gloves, protective glasses.
2. Unscrew the M20 nut (No. 1 in the figure below)
3. Remove the M20 screw, washer and bushing holding the knife (No. 2,3,4)
4. Evaluate the condition of the knife bushing shown in number 3. If it is worn, it must be replaced.
5. Remove the worn knife (No.5)
6. Put on new: knife, bolt, nut. Reassemble everything in the reverse order using thread locker on the screw connection.
7. Tighten the M20 nut with the appropriate torque in accordance with the “Torque Specification Chart” on page 20 and minimum bolt class 8.8.



Failure to comply with the above rules may pose a risk to the operator and bystanders, and may lead to damage to the brush cutter. The user is responsible for damages resulting from non-compliance with these rules.

Technical data and operational characteristics

TRBC-60

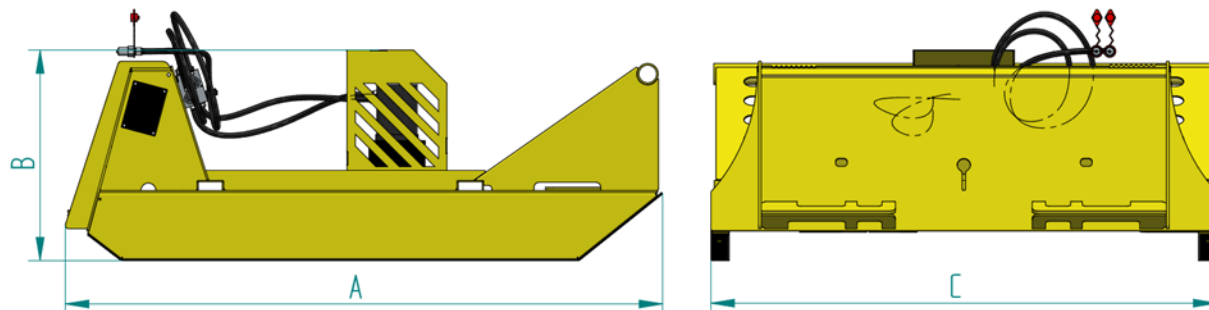


Main dimensions

Lp.	Name	Unit	Parametre
1	Type	-	Rotary
2	Cutting width	[mm]	1500
3	Power demand	[kW]	20
4	Number of work units	[pcs.]	1
5	Number of knives	[pcs.]	3
6	Cutting height high	[mm]	85
7	Cutting unit rpm	[RPM]	500±50
8	Max. work speed	[km/h]	2-5
9	Transport speed	[km/h]	15
10	Max. system pressure	[bar/MPa]	210/21
11	Oil flow	[l/min]	75
12	Hydraulic sockets	-	Compatible with ISO 7421-1
13	Oil type	-	SUPER UDT, API GL-4+
14	Mass	[kg]	487
15	Length [A]	[mm]	1795
16	Height [B]	[mm]	635
17	Width [C]	[mm]	1512

Technical data and operational characteristics

TRBC-72



Main dimensions

No.	Name	UoM	Parametre
1	Type	-	Rotary
2	Cutting width	[mm]	1800
3	Number of work units	[pcs.]	1
4	Number of knives	[pcs.]	3
5	Cutting height high	[mm]	75
6	Cutting unit rpm	[RPM]	500±50
7	Max. work speed	[km/h]	2-5
8	Transport speed	[km/h]	15
9	Max. system pressure	[bar/MPa]	210/21
10	Oil flow	[l/min]	75
11	Oil type	-	SUPER UDT, API GL-4+
12	Mass	[kg]	678
13	Length [A]	[mm]	2091
14	Height [B]	[mm]	639
15	Width [C]	[mm]	1860



Torque Specifications for Common Bolt Sizes															
Inches		Bolt Head Identification						Metric		Bolt Head Identification					
										5.8		8.8		10.9	
Bolt size (inches)	Thread pitch	Grade 2		Grade 5		Grade 8		Class 5.8		Class 8.8		Class 10.9			
		N.m	ft-lb	N.m	ft-lb	N.m	ft-lb	N.m	ft-lb	N.m	ft-lb	N.m	ft-lb		
1/4"	20	7	5	11	8	16	12	M5	0.08	4	3	6	4	9	7
1/4"	28	8	6	13	10	19	14	M6	1	6	4	10	7	15	11
5/16"	18	15	11	24	17	33	25	M8	1.25	16	12	25	18	36	27
5/16"	24	17	13	26	19	37	27	M8	1	17	13	26	19	38	28
3/8"	16	27	20	42	31	59	44	M10	1.5	31	23	48	35	71	52
3/8"	24	31	23	47	35	67	49	M10	1.25	33	24	51	38	75	55
7/16"	14	43	32	67	49	95	70	M10	1	35	26	53	39	78	58
7/16"	20	48	36	75	55	106	78	M12	1.75	54	40	84	62	123	91
1/2"	13	66	48	102	75	144	106	M12	1.5	56	41	87	64	128	94
1/2"	20	75	55	115	85	163	120	M12	1.25	59	44	90	66	133	98
9/16"	12	95	70	147	109	208	154	M14	2	84	62	133	98	195	144
9/16"	18	106	79	164	121	232	171	M14	1.5	94	69	142	105	209	154
5/8"	11	132	97	203	150	287	212	M16	2	131	97	206	152	302	223
5/8"	18	149	110	230	170	325	240	M16	1.5	141	104	218	161	320	236
3/4"	10	233	172	361	266	509	376	M18	2.5	181	133	295	218	421	310
3/4"	16	261	192	403	297	569	420	M18	2	196	145	311	229	443	327
7/8"	9	226	167	582	430	822	606	M18	1.5	203	150	327	241	465	343
7/8"	14	249	184	642	473	906	668	M20	2.5	256	189	415	306	592	437
1"	8	339	250	873	644	1232	909	M20	1.5	288	212	454	335	646	476
1"	12	371	273	955	704	1348	995	M22	2.5	344	254	567	418	807	595
1-1/8"	7	480	354	1077	794	1746	1288	M22	1.5	381	281	613	452	873	644
1-1/8"	12	539	397	1208	891	1958	1445	M24	3	444	327	714	526	1017	750
1-1/4"	7	677	500	1519	1120	2463	1817	M24	2	488	360	769	567	1095	808
1-1/4"	12	750	553	1682	1241	2728	2012	M27	3	656	484	1050	774	1496	1103
1-3/8"	6	888	655	1992	1469	3230	2382	M27	2	719	530	1119	825	1594	1176
1-3/8"	12	1011	746	2268	1673	3677	2712	M30	3.5	906	668	1420	1047	2033	1499
1-1/2"	6	1179	869	2643	1949	4286	3161	M30	2	1000	738	1600	1180	2250	1659
1-1/2"	12	1326	978	2974	2194	4823	3557	M36	4	1534	1131	2482	1830	3535	2607

Notes:

This chart is an approximate estimate of torque values.

Always tighten hardware to these values unless a different torque value or tightening procedure is listed for a specific application.

Fasteners must always be replaced with the same grade as specified in the manual.

Always use the proper tool for tightening hardware: SAE for SAE hardware and Metric for Metric hardware.

Make sure that fastener threads are clean and that you properly start thread engagement.



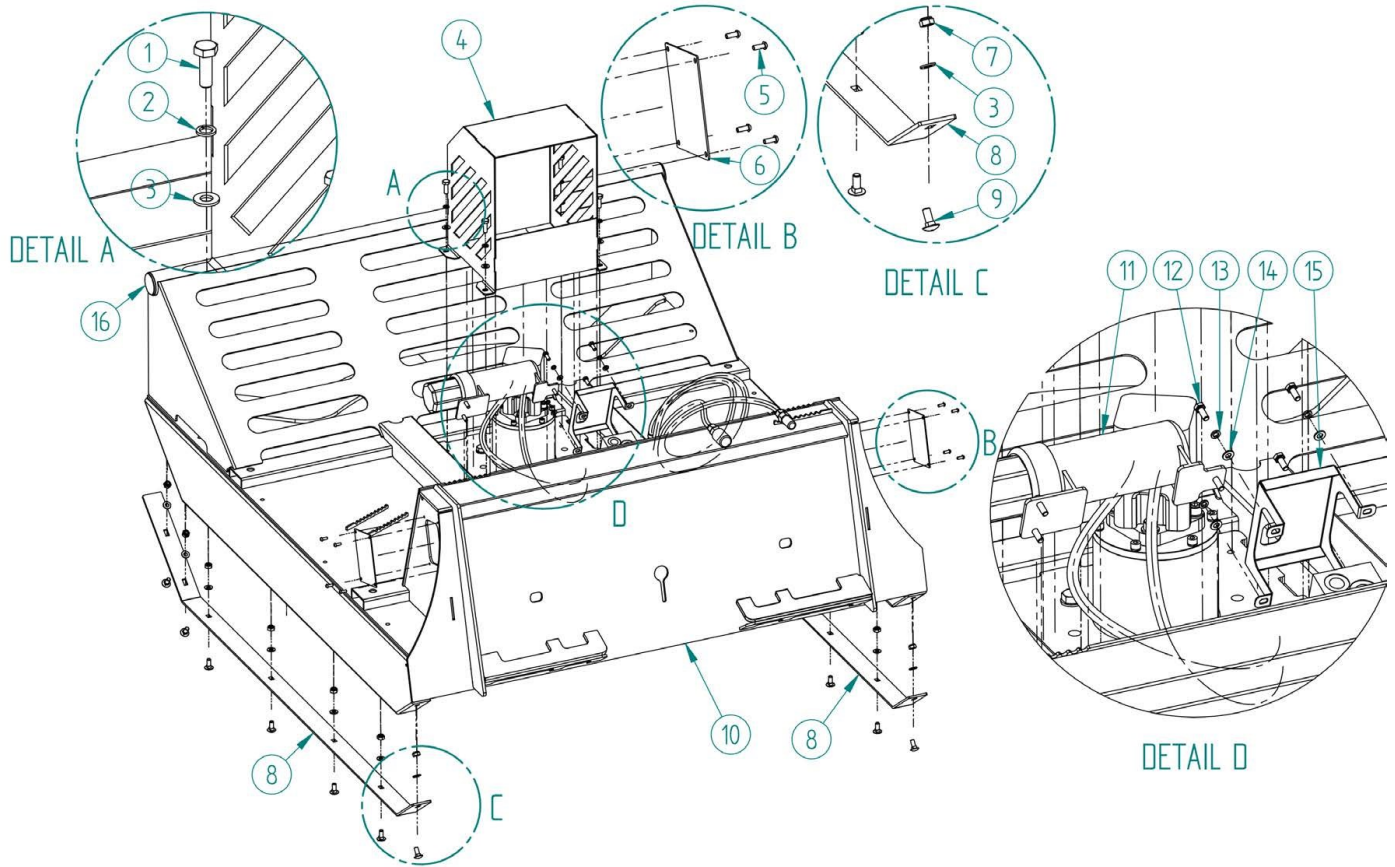
Heavy Duty Brush Cutter

TRBC60, TRBC72



Parts Manual

TRBC60 Frame

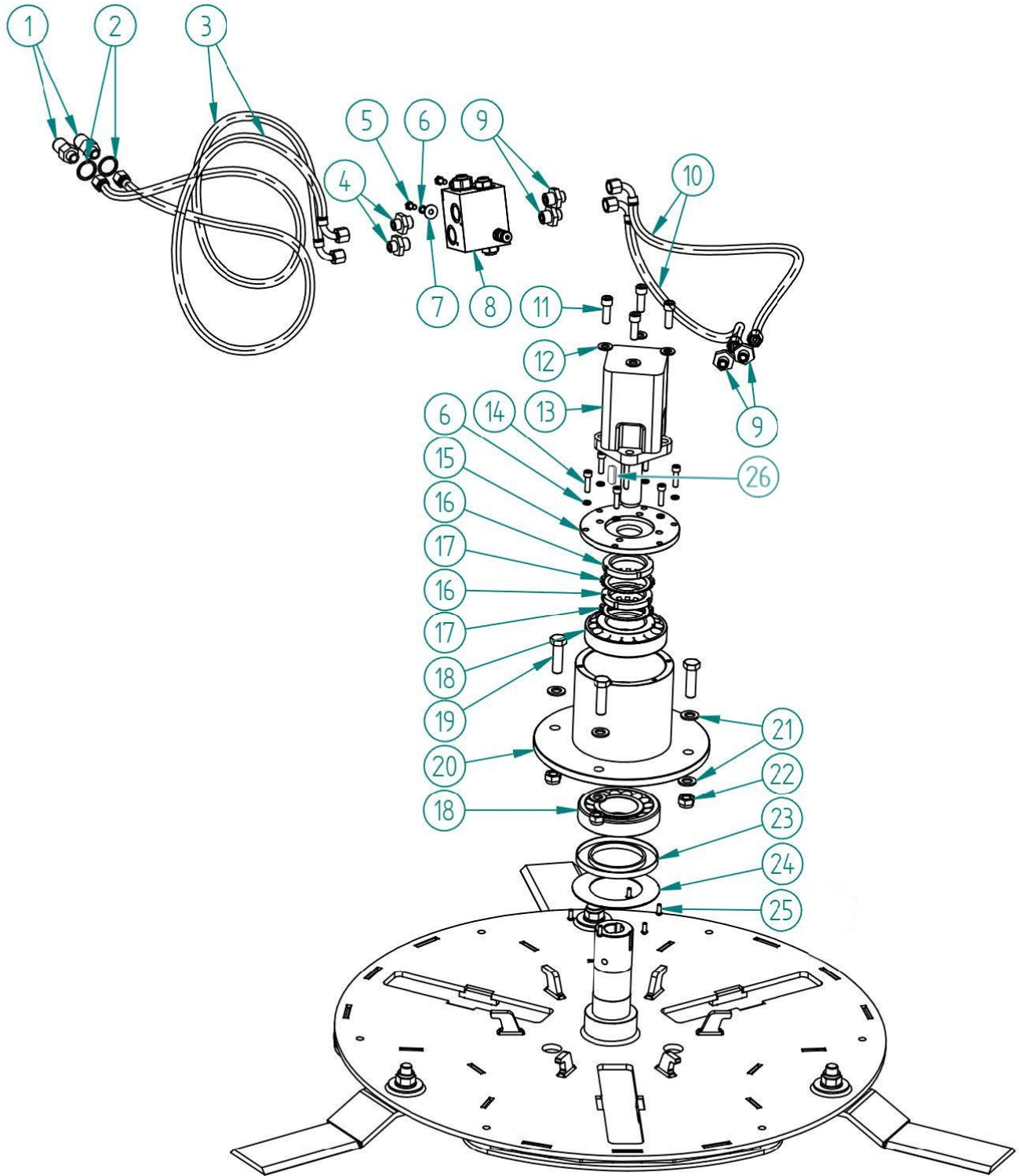




TBRC60 Frame

Item	Belco Part Number	Description	Qty.
1	TRBC000740	Bolt M10x25-8.8	4
2	TRBC000450	Washer M10	4
3	TRBC000456	Standard washer M10	18
4	TRBC620004	Cover WKT	1
5	TRBC002800	Ball head bolt M6x16	8
6	TRBC620042	Side cover WKT	2
7	TRBC000292	Self-lock nut M10	14
8	TRBC620010	Skid WKT	2
9	TRBC000827	Carriage bolt M10x25-8.8	14
10	TRBC620009	Body WKT	1
11	TRBC001697	Documents holder	1
12	TRBC000805	Bolt M8x25-8.8	4
13	TRBC000455	Spring washer M8	4
14	TRBC000471	Standard washer M8	4
15	TRBC610094	Monoblock guard	1
16	TRBC003658	Plug	2

TBRC60 Drive Unit

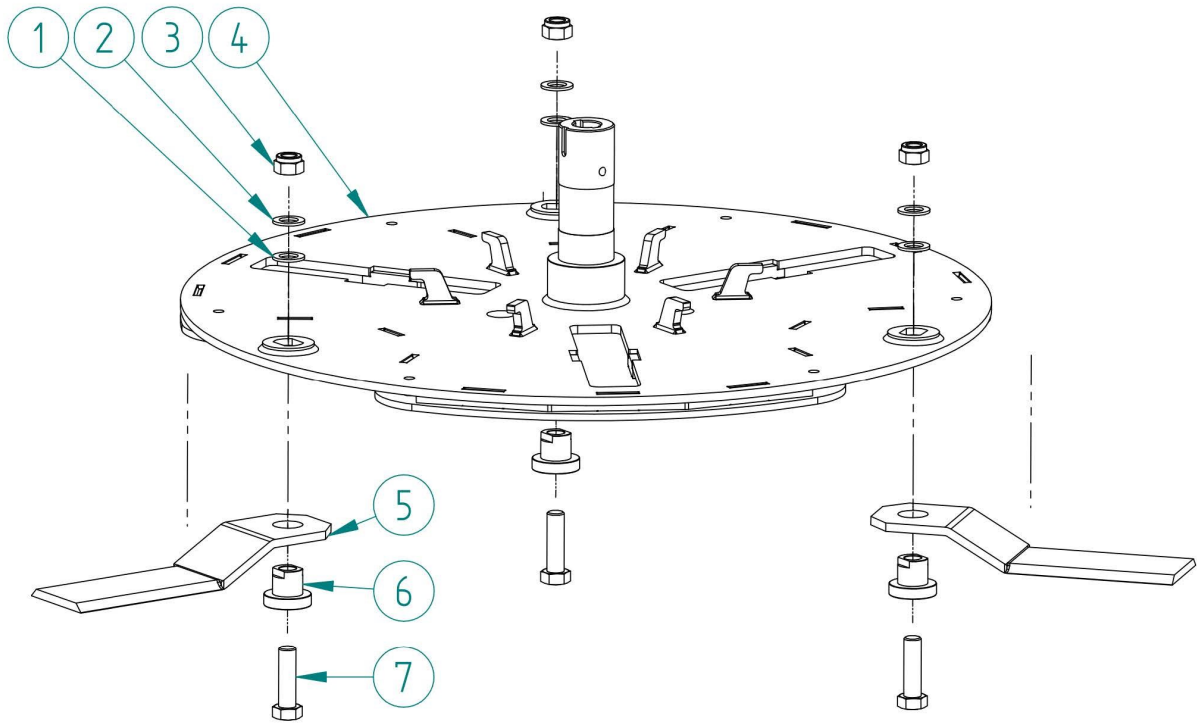




TBRC60 Drive Unit

Item	Belco Part Number	Description	Qty.
1	TRBC003654	Flat-face coupler cpl.	2
2	TRBC003653	Rubber metal bonded washer	2
3	TRBC002478	Hose P51/P52 M22x1.5 2SC DN13 L-1650	2
4	TRBC000581	Straight coupler ZN-140 G3/4/M22x1.5 ED/15L	4
5	TRBC000804	Bolt M8x20-8.8	2
6	TRBC000455	Spring washer M8	8
7	TRBC000443	Enlarged washer M8	2
8	TRBC003323	Hydraulic block WKT	1
9	TRBC000579	Straight coupler ZN-140 G1/2 M22x1.5 ED/15L	4
10	TRBC002479	Hose P51/P52 M22x1.5 2SC DN13 L-620	2
11	TRBC000730	Bolt with hexagonal socket M12x35-8.8	4
12	TRBC000458	Standard washer M12	4
13	TRBC003318	Hydraulic motor	1
14	TRBC002089	Bolt with hexagonal socket M8x30-8.8	6
15	TRBC620035	Motor cover WKT	1
16	TRBC003367	Bearing bush KM-13	2
17	TRBC003366	Washer MB13	2
18	TRBC003365	Bearing 30313	2
19	TRBC000783	Bolt M16x60-8.8	4
20	TRBC620001	Hub WKT	1
21	TRBC000460	Standard washer M16	8
22	TRBC000294	Self-lock nut M16	4
23	TRBC003368	Sealant 90x140x11	1
24	TRBC620000	Bottom cover WKT	1
25	TRBC002800	Ball head bolt M6x16	6
26	TRBC620087	Bearing Key (key for shaft)	1

TBRC60 Cutting Unit

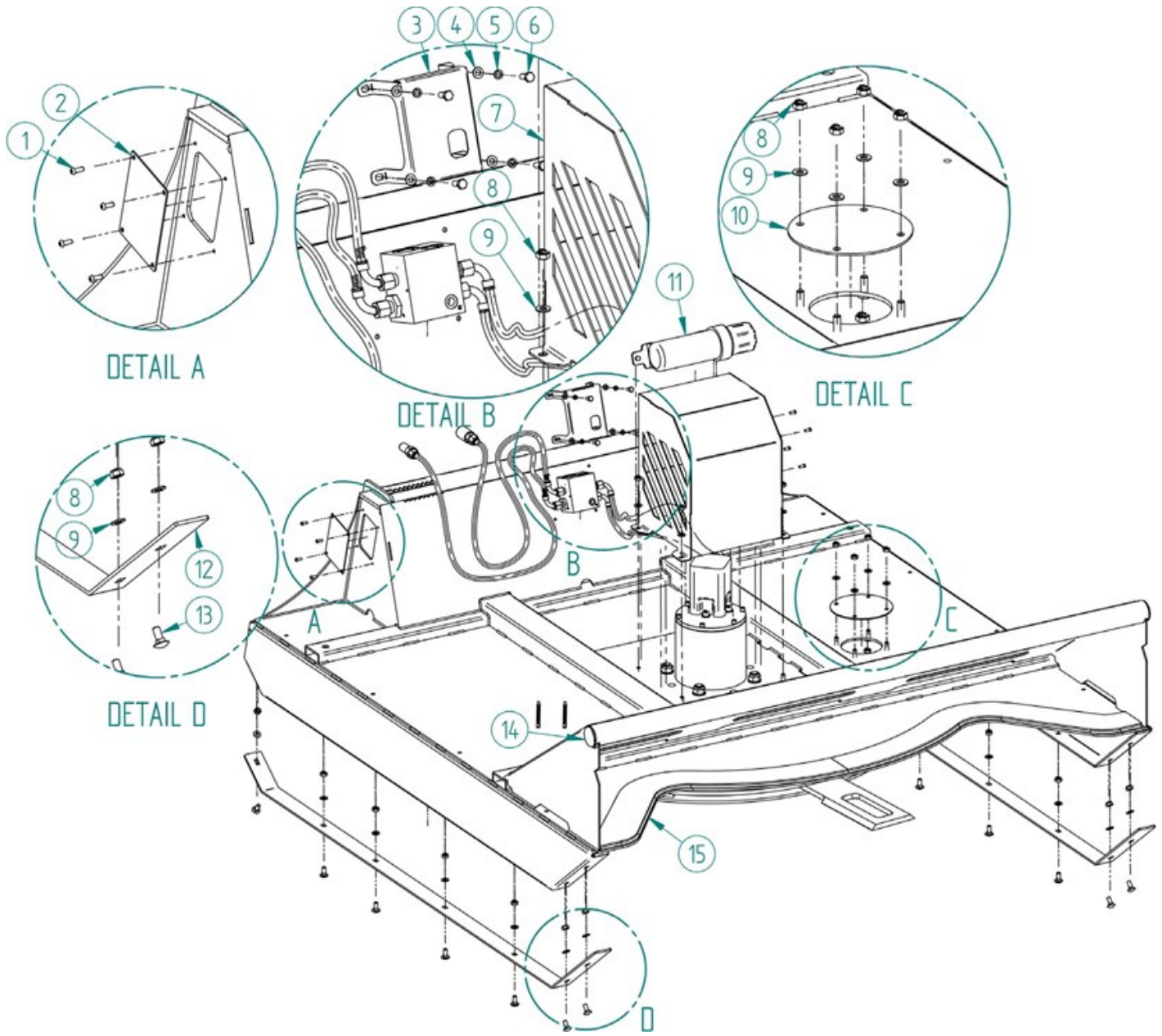




TBRC60 Cutting Unit

Item	Belco Part Number	Description	Qty.
1	TRBC000462	Standard washer M20	3
2	TRBC003674	Self-wedge washer M20	3
3	TRBC000255	Self-lock nut M20	3
4	TRBC620026	Working disc WKT	1
5	TRBC003384	Knife WKT 5 standard duty	3
	TRBC620092	Knife WKT 5 hardened hardened	3
6	TRBC620025	Knife bushing WKT for TRBC003384	3
	TRBC620074	Knife bushing WKT for TRBC620092	3
7	TRBC000792	Bolt M20x70-8.8	3
	TRBC620045	Blade set TRBC60 (Includes items 1,2,3,5,6,7)	3

TRBC72 Frame

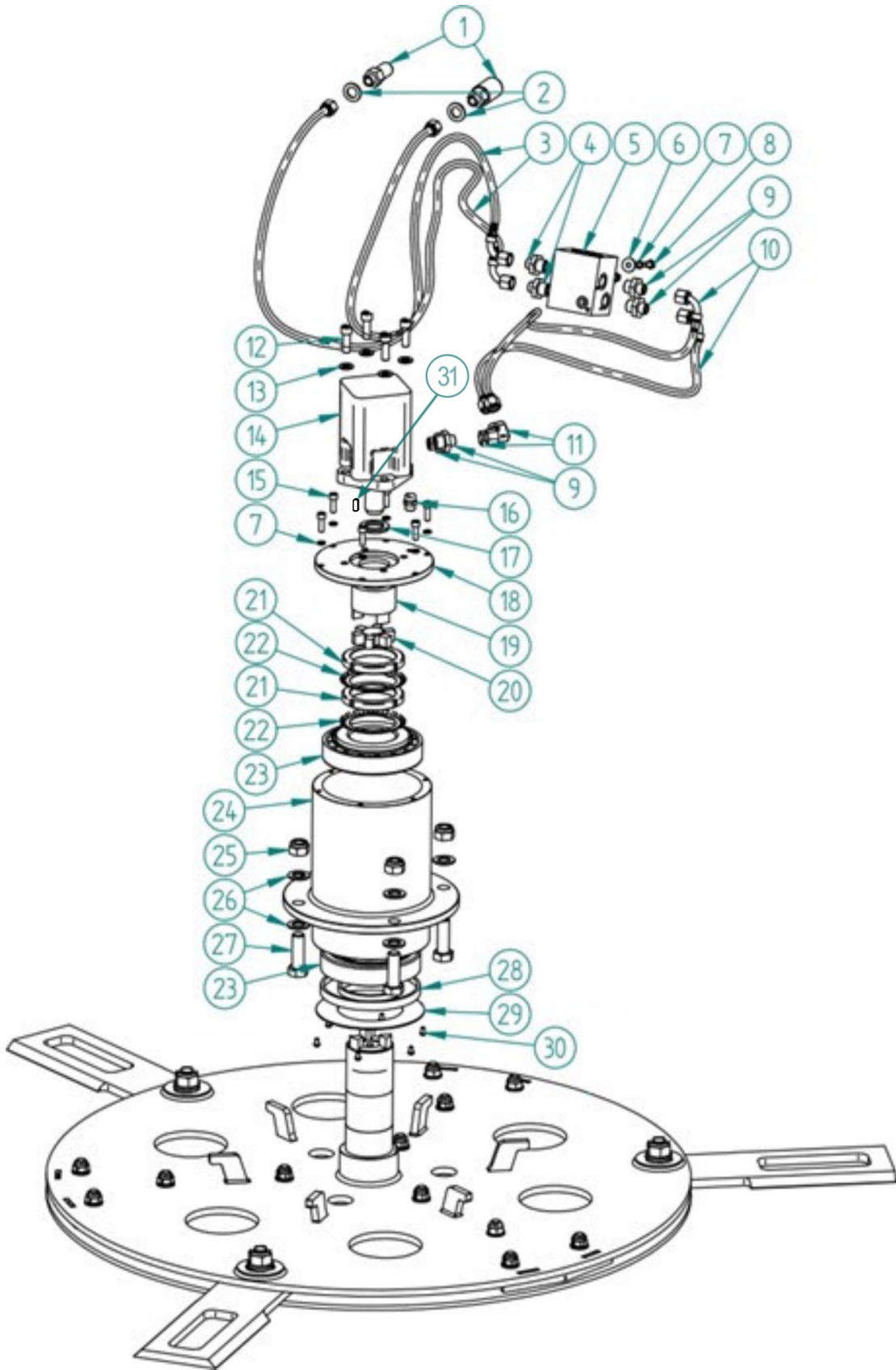




TBRC72 Frame

Item	Belco Part Number	Description	Qty.
1	TRBC002800	Ball head bolt M6x16	8
2	TRBC620042	Side cover plug	2
3	TRBC610094	Hydraulic block cover	1
4	TRBC000471	Standard washer M8	4
5	TRBC000455	Spring washer M8	4
6	TRBC000805	Bolt M8x25-8.8	4
7	TRBC620004	Cover WKT6	1
8	TRBC000292	Self-lock nut M10	22
9	TRBC000456	Standard washer M10	22
10	TRBC620077	Inspection hole cover WKT6	1
11	TRBC001697	Manual holder	1
12	TRBC620081	Skid WKT6	2
13	TRBC000827	Carriage bolt M10x25-8.8	14
14	TRBC003685	Cover plug	2
15	TRBC620046	Body WKT6	1

TBRC72 Drive Unit



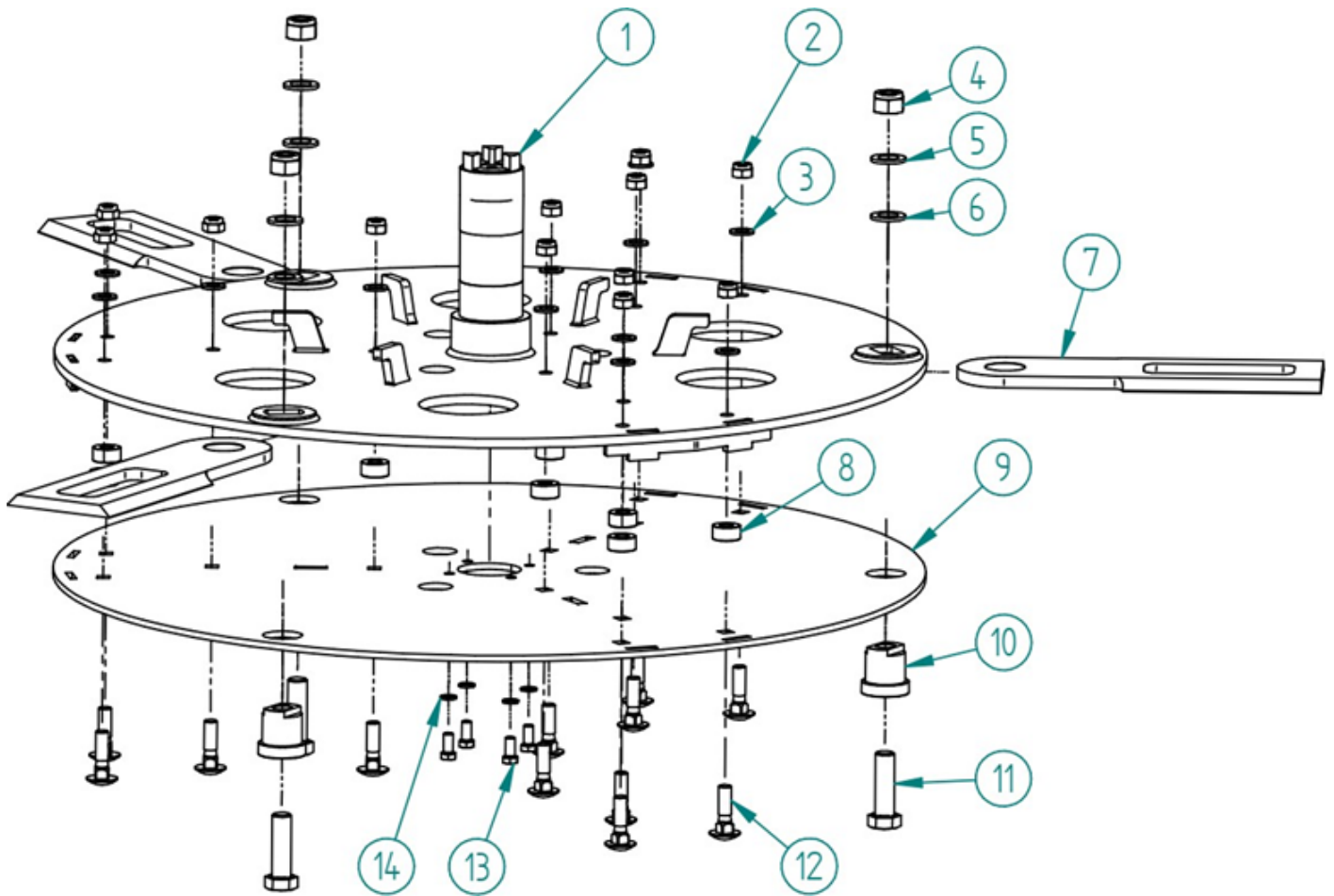


TBRC72 Drive Unit

Item	Belco Part Number	Description	Qty.
1	TRBC003654	Flat-face coupler cpl.	1
2	TRBC003653	Rubber metal bonded washer	2
3	TRBC001247	Hose C21P52/213/13-1800	2
4	TRBC000581	Straight coupler ZN-140 G3/4 /M22x1,5 ED/15L	4
5	TRBC003323	Hydraulic block WKT	1
6	TRBC000443	Large washer M8	2
7	TRBC000455	Spring washer M8	8
8	TRBC000804	Bolt M8x20-8.8	2
9	TRBC000579	Straight coupler ZN-140 G1/2 M22x1,5 ED/15L	4
10	TRBC001240	Hose P51/P52 M22x1,5 2 SN DN13 L-750	2
11	TRBC001033	Elbow fitting M22x1,5	2
12	TRBC000730	Hex. socket bolt M12x35-8.8	4
13	TRBC000458	Standard washer M12	4
14	TRBC003318	Hydraulic motor	1
15	TRBC002089	Hex. socket bolt M8x30-8.8	6
16	TRBC000329	Vent 3/8	1
17	TRBC620082	Motor washer WKT6	1
18	TRBC620062	Motor cap WKT6	1
19	TRBC620084	Motor clutch bushing WKT6	1
20	TRBC620086	Clutch flexible connector WKT6	1
21	TRBC003639	Nut KM16	2
22	TRBC003640	Tooth lock washer MB16	2
23	TRBC003641	Bearing 30316	2
24	TRBC620059	Hub WKT6	1
25	TRBC000255	Self-lock nut M20	4
26	TRBC000462	Standard washer M20	8
27	TRBC000792	Bolt M20x70-8.8	4
28	TRBC003643	Sealant 100x170x15	1
29	TRBC620063	Bottom cover WKT6	1
30	TRBC002800	Ball head bolt M6x16	6
31	TRBC620088	Bearing key - TRBC70	1



TBRC72 Cutting Unit



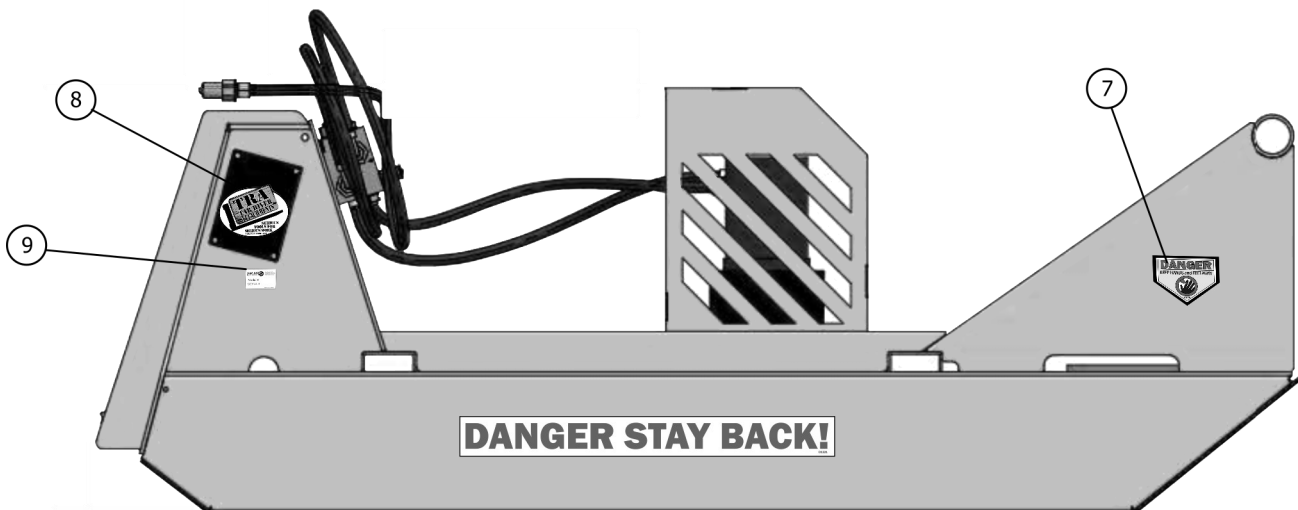
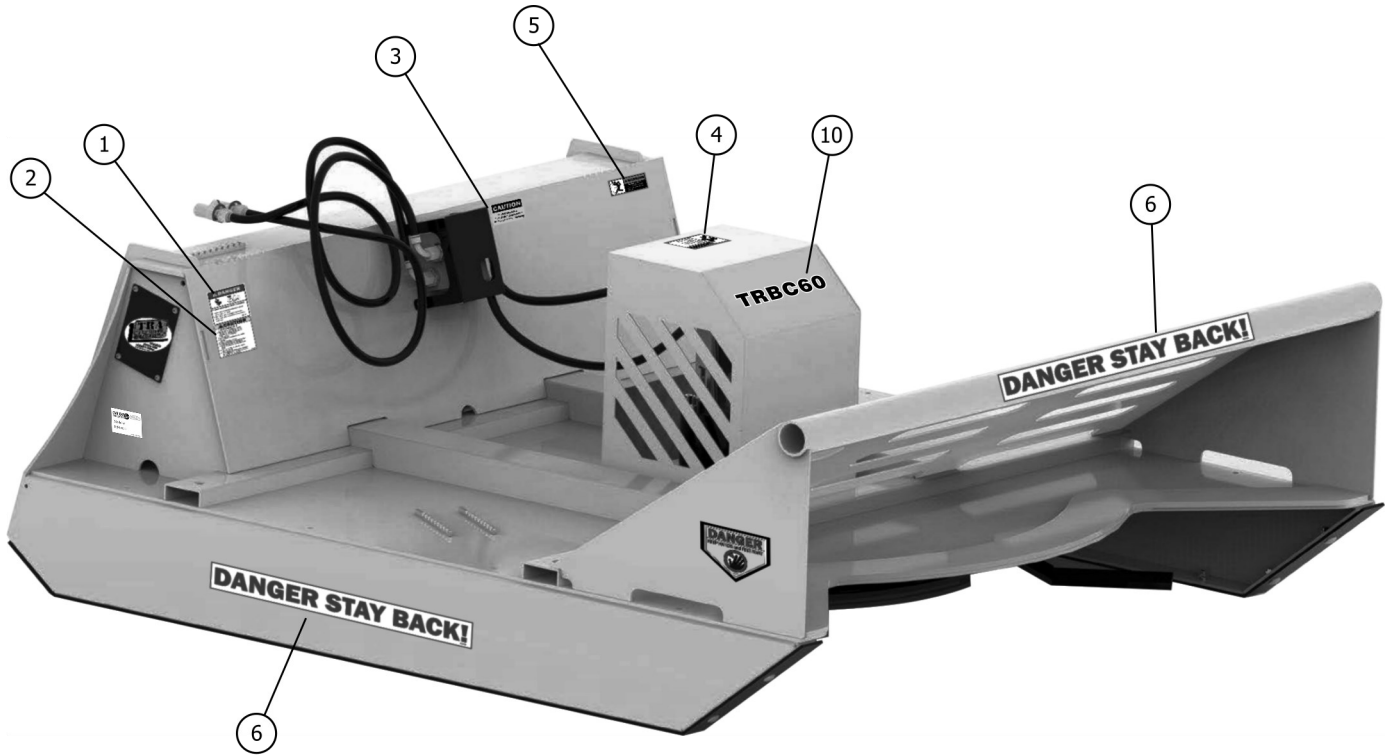


TBRC72 Cutting Unit

Item	Belco Part Number	Description	Qty.
1	TRBC620066	Cutting unit main disc	1
2	TRBC000294	Self lock nut M16	12
3	TRBC000460	Standard washer M16	12
4	TRBC000290	Self-lock nut M24	3
5	TRBC003675	Self-wedge nut M24	3
6	TRBC000464	Standard washer M24	3
7	TRBC620083	Blade WKT6 hardened	3
8	TRBC620085	Spacer WKT6	12
9	TRBC620080	Bottom disc WKT6	1
10	TRBC620079	Blade bushing WKT6	3
11	TRBC000798	Bolt M24x80-8.8	3
12	TRBC003682	Carriage bolt M16x60-8.8	12
13	TRBC002633	Bolt M12x25-8.8	4
14	TRBC000451	Spring washer M12	4
	TRBC000330	Blade set TRBC72 (Includes items 4,5,6,7,10,11)	3



Decals





Decals

Item	Part #	Description	Qty.
1	D1317	Decal Danger To prevent serious injury	1
2	950-917B	Decal Caution To avoid serious injury	1
3	D1319	Decal Caution Moving Machinery	1
4	9270110	Decal Warning High Pressure	1
5	D1003	Decal Warning Thrown Objects	1
6	D1321	Decal Danger Stay Back	3
7	D1320	Decal Danger Keep Hands and Feet Away	2
8	RT1212	Decal Tar River Attachments	2
9	NA	Serial Tag	1
10	NA	Model # TBRC60	1
	NA	Model # TBRC70	1



Warranty

LIMITED WARRANTY

Belco Resources Equipment warrants to the original purchaser of any new piece of machinery from Belco Resources Equipment, purchased from an authorized Belco Resources Equipment dealer, that the equipment be free from defects in material and workmanship for a period of one (1) year for non-commercial, state, and municipalities' use, ninety (90) days for commercial use from date of retail sale. Warranty for rental purposes is thirty (30) days. The obligation of Belco Resources Equipment to the purchaser under this warranty is limited to the repair or replacement of defective parts.

Replacement or repair parts installed in the equipment covered by this limited warranty are warranted for ninety (90) days from the date of purchase of such part or to the expiration of the applicable new equipment warranty period, whichever occurs later. Warranted parts shall be provided at no cost to the user at an authorized Belco Resources Equipment dealer during regular working hours. Belco Resources Equipment reserves the right to inspect any equipment or parts, which are claimed to have been defective in material or workmanship.

This limited warranty does not apply to and excludes wear items such as shear pins, tires, tubes knives, blades or other wear items. Oil or grease is not covered by this warranty.

All obligations of Belco Resources Equipment under this limited warranty shall be terminated if:

Proper service is not performed on the machine.

The machine is modified or altered in any way.

The machine is being used or has been used for purposes other than those for which the machine was intended.

DISCLAIMER OF IMPLIED WARRANTIES & CONSEQUENTIAL DAMAGES

Belco Resources Equipment obligation under this limited warranty, to the extent allowed by law, is in lieu of all warranties, implied or expressed, including implied warranties of merchantability and fitness for a particular purpose and any liability for incidental and consequential damages with respect to the sale or use of the items warranted. Such incidental and consequential damages shall include but not be limited to: transportation charges other than normal freight charges; cost of installation other than cost approved by Belco Resources Equipment; duty; taxes; charges for normal service or adjustment; loss of crops or any other loss of income; rental of substitute equipment, expenses due to loss, damage, detention or delay in the delivery.

REGISTRATION

The online Warranty Registration must be completed in order to qualify for coverage on this Limited Warranty. Visit br-equipment.com, click on "Warranty Registration" and completely fill out the form to register the new piece of equipment.



Page left blank intentionally



401 Jeffreys Road
Rocky Mount, NC 27804
www.tarrivermfg.com

Tel: 252-822-7140
Fax: 252-787-5855
Sales@tarrivermfg.com